

GRAB BAR INSTALLATION INSTRUCTIONS

⚠ WARNING

GRAB BAR MAY NOT PROVIDE DESIGNED AMOUNT OF SUPPORT UNLESS THESE INSTALLATION INSTRUCTIONS ARE STRICTLY FOLLOWED.

For proper installation, at least one end of Grab Bar MUST be positioned over a wall stud. For solid support, at least two (2) of the three (3) screws on the end of the Grab Bar MUST go through the wallboard or tile and be tightly secured into the wall stud. Locate the wall stud(s) behind the wall before beginning installation (a stud finder can be obtained from a hardware store).

THE FOLLOWING STEPS REQUIRE DRILLING INTO THE WALL.

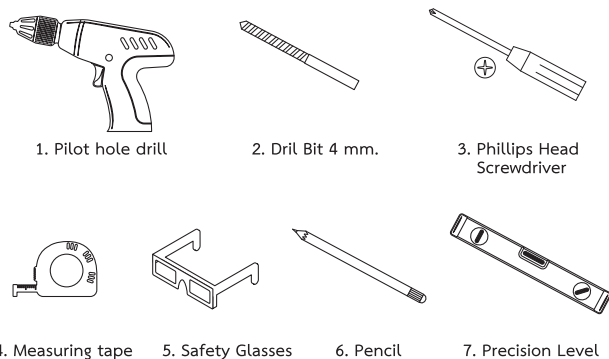
When drilling into the wall, exercise care to avoid any electrical wiring or plumbing that may be located behind the wall. Damaged electrical wiring can cause electrical shock and/or fire. Since older homes do not always fall in line with current housing codes and requirements, know where internal wall wiring is located so that no wires will interfere with your installation.

PROPER INSTALLATION IS EXTREMELY IMPORTANT. IF IN DOUBT, INSTALLATION SHOULD BE DONE BY A QUALIFIED PROFESSIONAL.

CAUTION AND SAFETY WARNINGS:

- DO NOT install this product without first reading and understanding this instruction sheet. If you are unable to understand these Warnings and Instructions, contact a professional or technical personnel for assistance before attempting to install this product-otherwise, injury may occur.
- After ANY adjustments, repair or service and BEFORE use, make sure that all attaching hardware is tightened securely.
- Assist Bars add security for bath and commode areas if attached as instructed. Location, size, and angle of bars should be determined by a qualified professional to provide optimum safety and function.
- Use EXTREME caution on wet tub or floor surfaces.
- Users with limited physical capabilities should be supervised or assisted in bath and commode areas, even when using Assist Bars.
- This Assist Bar can provide support and increased stability for an individual weighing up to 200 kilograms. Assist Bars are NOT designed to support the total weight of an individual. Use the bar for assistance ONLY.
- Be sure Assist Bars are correctly and securely installed. NEVER use Assist Bars if any looseness is noted.
- (For Anchor Mount) DO NOT install supplied wall anchors into wallboard less than 1/2" or greater than 2 1/2" thick.
- (For Anchor Mount) DO NOT install supplied wall anchors into wallboard that has been subjected to water damage or decay.
- (For Anchor Mount) DO NOT install supplied wall anchors into a wood stud.
- (For Anchor Mount) DO NOT install supplied wall anchors into lightweight concrete wall.
- Locate studs prior to drilling. Determine if plumbing, electrical or other obstructions, i.e. beads of adhesive ribbing, as in some tub surrounds, are contained behind the wall.
- If mounting to an uneven surface, use silicone to fill any gaps between surface and mounting plate.
- Apply a bead of silicone sealant designed for wet applicators to the back face of both assist bar mounting flanges. This will prevent water from bleeding through the mounting holes potentially damaging the wall board.

TOOLS REQUIRED:



COMPONENTS INCLUDED IN THE PACKAGE:

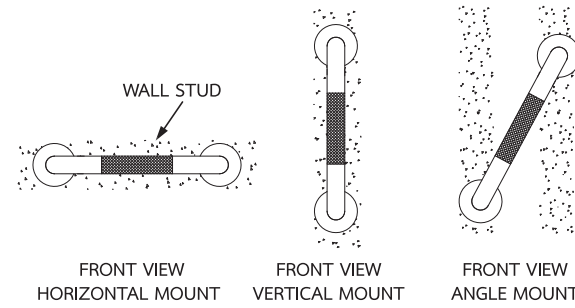
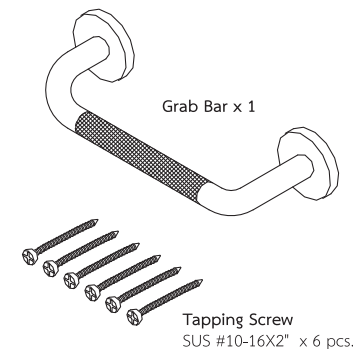


Fig. 1

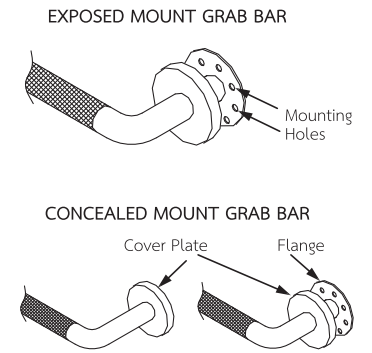


Fig. 2

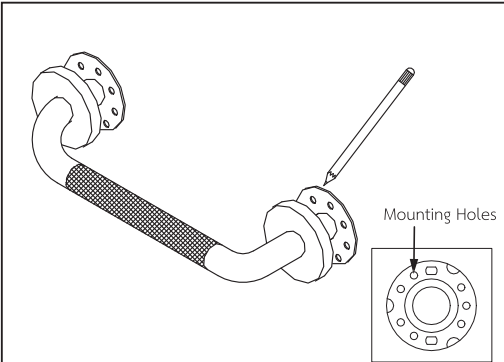


Fig. 3

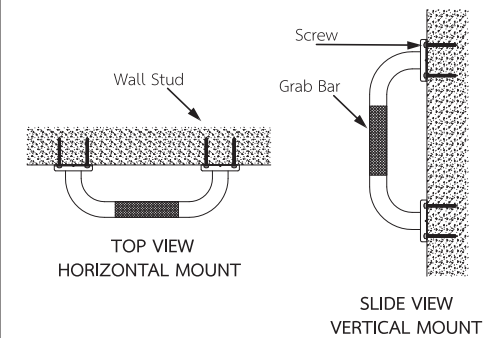


Fig. 4

BEFORE INSTALLING:

1. Remove the parts and products from package. If concealed mount Grab Bar is used, move cover plates away from mounting holes. (Fig. 2)
2. Determine the location of the product and where you want to install it.
3. Place product on the wall at desired location. If mounted horizontally, check that the product is level.
4. Use a pencil and mark the centers on each side of the product for the mounting locations. (Fig. 1)
5. Location: A stud finder should be used to verify if there are any studs behind the marked locations. Install the product using stud-mounting directions if a stud is available. If a stud is not located within the area where the supplied anchor will be installed then use the non-stud mounting directions.

STUD-MOUNTING DIRECTIONS:

6. Put on safety glasses before starting.
7. Use the power drill to drill a pilot hole at each of the marked center positions from the previous step.
8. Repeat Step 7 for the opposite end of the Grab Bar.
9. Place Grab Bar on wall, by aligning the flange plate with mounting holes with the holes in the wall.
10. Securely tighten all mounting screws with Phillips head screwdriver. (HAND TIGHTEN ONLY) (fig 3).
11. If concealed mount Grab Bar is used, move cover plates over mounting holes and firmly press against the wall.
12. Test if the grab bar is installed firmly. (fig 4)