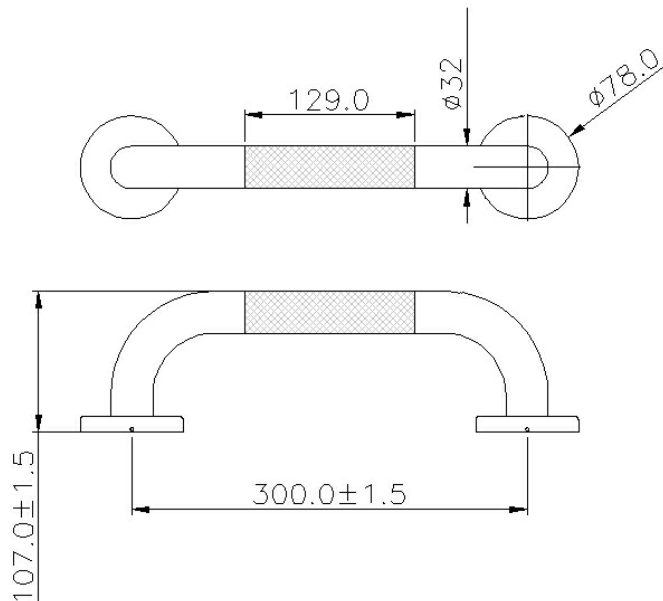


SUPPORT DIAMOND KNURL HAND RAIL 300MM BRUSHED  
STAINLESS STEEL

71102.SS  
\$119

ELEMENTi



	Heavy Duty Fixings	Heavy Duty Fixings
	Highly Resistant To Spotting	Highly resistant to water spotting
	Compliance	Manufactured to ISO9001:2015 Quality Management
	Multiple Fixing Points with full cover flange	For added extra strength and stability.
	No Plating or Brushing Process	Added durability through no plating or brushing process.
	Residential/Light Commercial Use	Suitable for Residential/Light Commercial Use (Kitchens, Bathrooms and Laundries in Hotels, Motels and Retirement Villages).
	Commercial Use	Suitable for commercial use.
	Guarantee	5 Year Guarantee
	Hygienic Design	
	304 Grade Stainless Steel	304 Grade Stainless Steel
	BPIR - NZS 4121:2001 Accessories	This product complies with Building Code Regulation NZS 4121:2001 Access & Mobility Accessories





BPIR - B2.3.1  
Durability

This product complies with Building Code Regulation  
B2.3.1 Durability

---